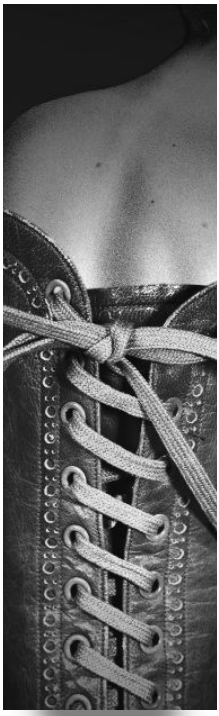


C A N D I D A T E

P R O F I L E



As well as stylistic and graphic qualities, the candidate must have the necessary knowledge to create an attractive and sensible shoe.

The proposed prototype must take into account the technical problems related to mass production and consequently be integrated into an existing commercial network.

According to the local Romans shoe tradition, the model must satisfy the demands of an upmarket clientele susceptible to a perfect finish and to variations in fashion, appropriate, without being ostentatious.

All students from European establishments can apply: Those who are either still studying or who have finished their studies during the last year but have not a full time job. The age limit must be 25.

The application which do not correspond to these criteria will be given a close look and would possibly be given a special dispensation.

SEE ENCLOSED CANDIDATE SHEET
AND TECHNICAL DATA SHEET.