

— S P E C I F I C A T I O N S S H E E T —

Consult carefully the specifications sheet as it not only gives the necessary instructions to carry out the project, but also enlightens the candidates into dealing with the finer aspects of the competition theme.

TECHNICAL SPECIFICATIONS:

- *A woman's shoe, ergonomic and feasible*
- *Open or closed, to be worn in town*
- *No particular season (summer or winter)*
- *Heel: height and design to be defined by the creator*
- *Material required: leather and contemporary materials in all their forms.*
- *Indicate on the technical data sheet the features of the sole and lining.*

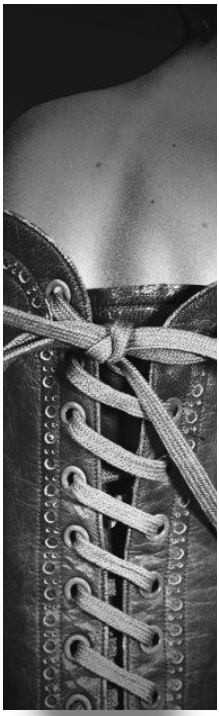
I - THE DRAWING:

- *Support: white A4 paper - 210 x 297mm*
- *By hand only (designs carried out with the help of a computer are not accepted)*
- *Colour: any means (gouache, ink, pastels, felt pens)*
- *Indicate on the back: surname, first name, address and tel. number*
- *Fill in carefully the technical information sheet and enclose it with your drawing (keep a copy)*
- *The drawings which are chosen for the competition or the exhibition will not be returned to the designers after the first jury (April 2004), so keep a colour photocopy (for the manufacture of the prototype).*

Advice:

protect the drawing so that it is not damaged in the post.

II - THE SHOE:



- made of leather, contemporary materials
 - an exact realisation of the drawing in its shape and colour
 - the features defined on the technical data sheet must be respected
 - perfect finish (inside and out)
- Creation: it is advisable that the designer (himself or herself) creates the prototype, however the work can be carried out with another student. Do not forget to mention this on the candidate sheet. If the design is successful, the prize will be shared between the 2 candidates.
- Adults on a professional training course or who obtained their diplomas less than a year ago, must carry out the whole project alone: drawing and shoe.**
- It is advisable to take the same precautions for sending the shoe as for the drawing. To avoid any loss or damage, it is preferable to send your parcel by registered mail.

Dispatch address:

(drawing and shoe) and for all correspondence
(no information will be given by telephone).

EUROPEAN GRAND PRIX IN SHOE DESIGN

THE INTERNATIONAL SHOE MUSEUM
2 Rue Sainte- Marie
26100 ROMANS - FRANCE

CTC WEB SITE : www.ctc.fr/saintcrepin.htm
